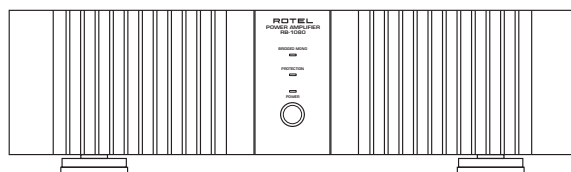
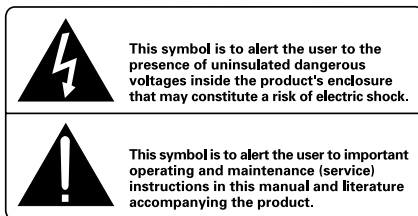
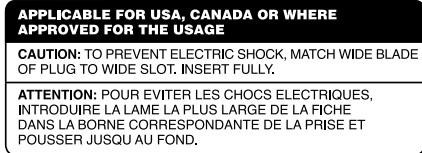


Owner's Manual
Manuel d'utilisation
Bedienungsanleitung
Manuale di Istruzioni
Manual de Instrucciones
Gebruiksaanwijzing

RB-1080

Stereo Power Amplifier
Amplificateur De Puissance Stéréo
Stereo-Endstufe
Finale di Potenza Stereo
Etapas de Potencia Estereofónica
Stereo Eindversterker





WARNING: There are no user serviceable parts inside. Refer all servicing to qualified service personnel.

WARNING: To reduce the risk of fire or electric shock, do not expose the unit to moisture or water. Do not allow foreign objects to get into the enclosure. If the unit is exposed to moisture, or a foreign object gets into the enclosure, immediately disconnect the power cord from the wall. Take the unit to a qualified service person for inspection and necessary repairs.

Read all the instructions before connecting or operating the component. Keep this manual so you can refer to these safety instructions.

Heed all warnings and safety information in these instructions and on the product itself. Follow all operating instructions.

Clean the enclosure only with a dry cloth or a vacuum cleaner.

You must allow 10 cm or 4 inches of unobstructed clearance around the unit. Do not place the unit on a bed, sofa, rug, or similar surface that could block the ventilation slots. If the component is placed in a bookcase or cabinet, there must be ventilation of the cabinet to allow proper cooling.

Keep the component away from radiators, heat registers, stoves, or any other appliance that produces heat.

The unit must be connected to a power supply only of the type and voltage specified on the rear panel of the unit.

Connect the component to the power outlet only with the supplied power supply cable or an exact equivalent. Do not modify the supplied cable in any way. Do not attempt to defeat grounding and/or polarization provisions. Do not use extension cords.

Do not route the power cord where it will be crushed, pinched, bent at severe angles, exposed to heat, or damaged in any way. Pay particular attention to the power cord at the plug and where it exits the back of the unit.

The power cord should be unplugged from the wall outlet if the unit is to be left unused for a long period of time.

Immediately stop using the component and have it inspected and/or serviced by a qualified service agency if:

- The power supply cord or plug has been damaged.
- Objects have fallen or liquid has been spilled into the unit.
- The unit has been exposed to rain.
- The unit shows signs of improper operation
- The unit has been dropped or damaged in any way

Place the unit on a fixed, level surface strong enough to support its weight. Do not place it on a moveable cart that could tip over.



Figure 1: Controls and Connections
Commandes et branchements
Bedienelemente und Anschlüsse
Controlli e collegamenti
Controles y Conexiones
De bedieningsorganen en aansluitingen

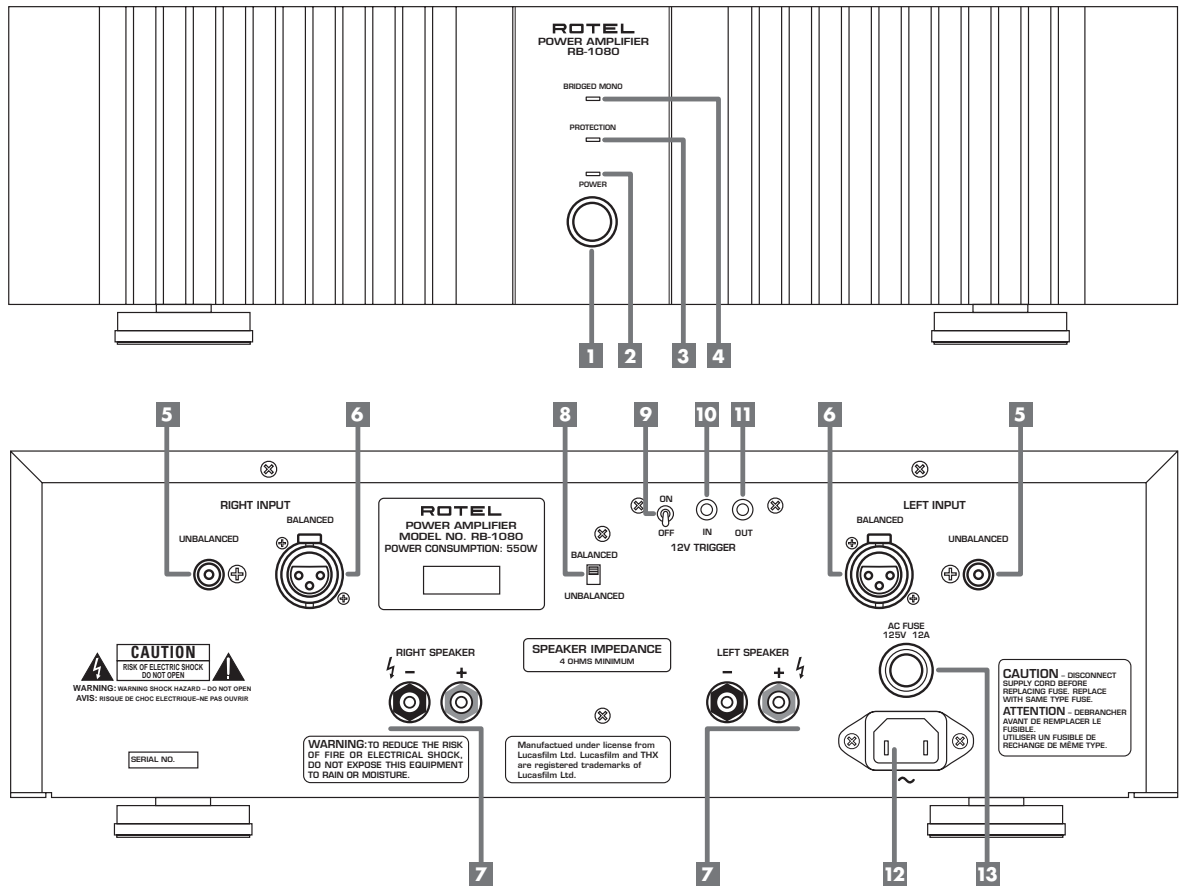


Figure 2: Stereo Connections
Branchement des entrées et des enceintes en stéréo
Anschlußdiagramm bei Stereobetrieb
Collegamenti stereo - Ingressi e diffusori
Conexión de la señal de entrada y las cajas acústicas
De cinch- en luidsprekerverbindingen

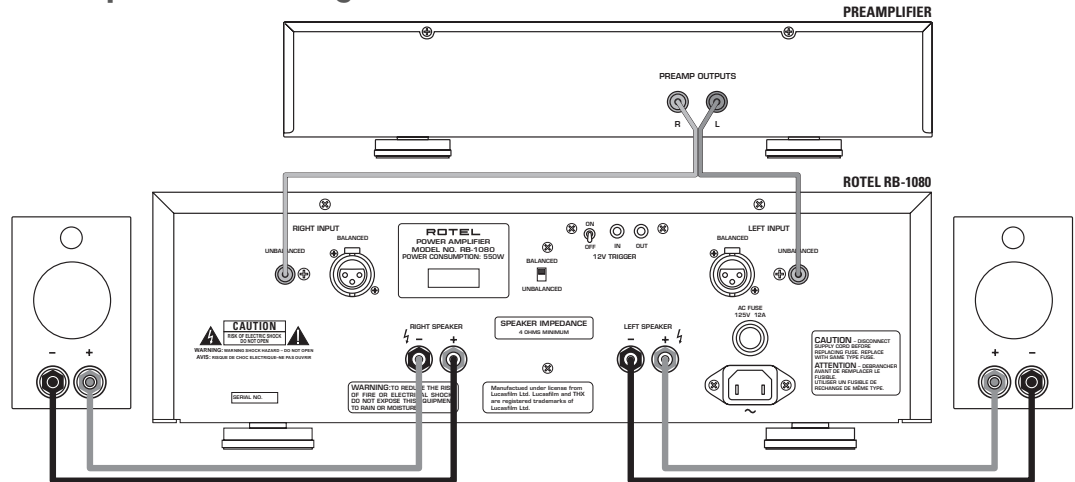
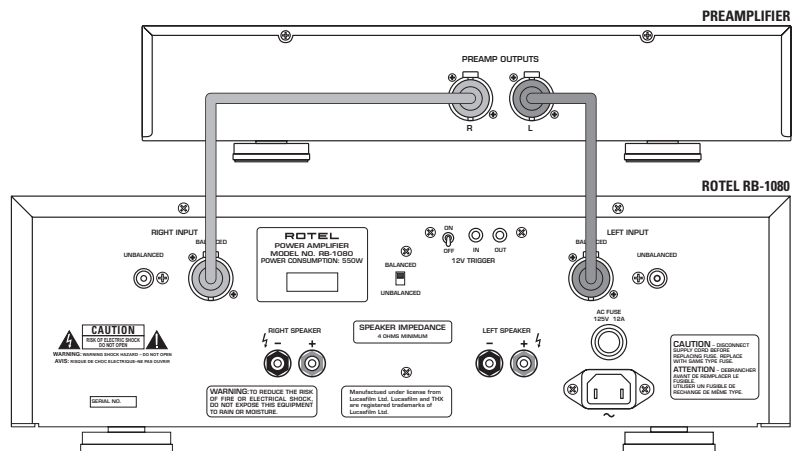


Figure 3: Balanced Inputs Connection
Branchement des entrées symétriques
Anschlußdiagramm (Symmetrische Eingänge)
Collegamento ingressi bilanciati
Entradas Balanceadas
De gebalanceerde ingangen



Contents

Figure 1: Controls and Connections	3
Figure 2: Stereo Connections	4
Figure 4: Balanced Input Connection	4
Contents	5
About Rotel	5
Getting Started	5
A Few Precautions	5
Placement	6
AC Power and Control	6
AC Power Input 12	6
Power Switch 1 and Power Indicator 2	6
Trigger ON/OFF Mode Selector 9	6
12V Trigger Input 10 and Output 11	6
Protection Circuitry 3	6
Input Signal Connections	7
Input Selector Switch 8	7
RCA Inputs (unbalanced) 5	7
XLR Inputs (balanced) 6	7
Speaker Connection	7
Speaker Selection	7
Speaker Wire Selection	7
Polarity and Phasing	7
Speaker Connection 7	7
Troubleshooting	8
Front Panel Power Indicator Is Not Lit	8
Fuse Replacement 13	8
No Sound	8
Protection Indicator Is Lit	8
Specifications	8

About Rotel

A family whose passionate interest in music led them to manufacture high fidelity components of uncompromising quality founded Rotel over 40 years ago. Through the years that passion has remained undiminished and the family goal of providing exceptional value for audiophiles and music lovers, regardless of their budget, is shared by all Rotel employees.

The engineers work as a close team, listening to, and fine tuning each new product until it reaches their exacting musical standards. They are free to choose components from around the world in order to make that product the best they can. You are likely to find capacitors from the United Kingdom and Germany, semi conductors from Japan or the United States, while toroidal power transformers are manufactured in Rotel's own factory.

Rotel's reputation for excellence has been earned through hundreds of good reviews and awards from the most respected reviewers in the industry, who listen to music every day. Their comments keep the company true to its goal – the pursuit of equipment that is musical, reliable and affordable.

All of us at Rotel thank you for buying this product and hope it will bring you many hours of enjoyment.

Getting Started

Thank you for purchasing the Rotel RB-1080 Stereo Power Amplifier. When used in a high-quality music or home theater system, your Rotel amplifier will provide years of musical enjoyment.

The RB-1080 is a high-power, two-channel power amplifier, providing the highest level of audio performance. Discrete output devices, a massive power supply, premium components, and Rotel's Balanced Design ensure superb sound quality. High current capability allows the RB-991 to drive the most demanding loudspeakers.

Be aware that the RB-1080 is capable of high power levels, in excess of 200 watts per channel. Make sure that your speakers can handle the power of the RB-1080. If in doubt about your speakers, ask your local Rotel audio retailer for advice.

The RB-1080 is straightforward in its installation and operation. If you have experience with other stereo power amplifiers, you shouldn't find anything perplexing. Plug in a pair of high-quality RCA cables from your preamp into the amplifier inputs, wire up your speakers, and enjoy. Alternatively, the RB-1080 provides an optional pair of balanced inputs for use with preamps or processors that offer these low-noise XLR-connections. If you choose this option, you will need to reset a back panel switch selecting the balanced inputs. Again, nothing very confusing.

A Few Precautions

Please read this manual carefully. In addition to basic installation and operating instructions, it provides valuable information on various RB-1080 system configurations as well as general information that will help you get optimum performance from your system. Please contact your authorized Rotel audio retailer for answers to any questions you might have. In addition, all of us at Rotel welcome your questions and comments.

Save the RB-1080 shipping carton and all enclosed packing material for future use. Shipping or moving the RB-1080 in anything other than the original packing material may result in severe damage to your amplifier.

Fill out and send in the owner's registration card packed with the RB-1080. Also be sure to keep the original sales receipt. It is your best record of the date of purchase, which you will need in the event warranty service is ever required.

Placement

The RB-1080 generates heat as part of its normal operation. The heat sinks and ventilation openings in the amplifier are designed to dissipate this heat. The ventilation slots in the top cover must be open. There should be 10 cm (4 inches) of clearance around the chassis, and reasonable airflow through the installation location, to prevent the amplifier from overheating.

Likewise, remember the weight of the amplifier when you select an installation location. Make sure that the shelf or cabinet can support its considerable bulk. Again, use common sense.

AC Power and Control

AC Power Input 12

Because of its high power rating, the RB-1080 can draw considerable current. Therefore, it should be plugged directly into a 2-pin polarized wall outlet. Do not use an extension cord. A heavy duty multi-tap power outlet strip may be used if it (and the wall outlet) is rated to handle the current demanded by the RB-1080 and all the other components connected to it.

Be sure the Power Switch on the front panel of the RB-1095 is turned off (in the out position). Then, connect the supplied power cord to the Power Connector 12 on the back panel of the amplifier and to the AC power outlet.

Your RB-1080 is configured at the factory for the proper AC line voltage in the country where you purchased it (either 115 volts AC or 230 volts AC with a line frequency of either 50 Hz or 60 Hz). The AC line configuration is noted on a decal on the back panel.

Note: Should you move your RB-1080 amplifier to another country, it is possible to reconfigure your amplifier for use on a different line voltage. Do not attempt to perform this conversion yourself. Opening the enclosure of the RB-1080 exposes you to dangerous voltages. Consult a qualified service person or the Rotel factory service department for information.

If you are going to be away from home for an extended period of time such as a month-long vacation, it is a sensible precaution to unplug your amplifier (as well as other audio and video components) while you are away.

Power Switch 1 and Power Indicator 2

The power switch is located on the front panel of your amplifier. To turn the amplifier on, push the switch in. The LED indicator above the switch will light, indicating that the amplifier is turned on. To turn the amplifier off, push the button again and return it to the out position.

Trigger ON/OFF Mode Selector 9

The Amplifier provides the option for manual or automatic power on/off operation. These modes are selectable using a toggle switch on the back panel.

With the switch in the +12V TRIGGER ON position, the amplifier is turned on automatically when a 12V trigger signal is present at the 3.5 mm Jack of TRIGGER IN on the rear panel. The amplifier will go into standby mode if the +12V signal is not present. The front panel POWER SWITCH overrides this function. It must be ON for the +12V trigger to work. Turning the switch OFF cuts power to the amplifier, regardless of whether or not a trigger signal is present.

12V Trigger Input 10 and Output 11

The jack labeled IN is for connecting the 3.5mm Plug/Cable carrying a +12 volt trigger signal to turn the amplifier on and off. To use this feature the toggle switch must be set to the ON position. This input accepts any control signal (AC or DC) ranging from 3 volts to 30 volts.

The jack labeled OUT is for connecting another 3.5mm plug/cable to provide a 12V trigger signal to other components. The 12V output signal is available whenever a +12 volt trigger signal is applied to the IN connector.

Protection Circuitry 3

The RB-1080 features a thermal protection circuit that protects the amplifier against potential damage in the event of extreme or faulty operating conditions. Unlike many designs, the RB-1080's protection circuit is independent of the audio signal and has no impact on sonic performance. Instead, the protection circuit monitors the temperature of the output devices and shuts down the amplifier if temperatures exceed safe limits.

Most likely, you will never see this protection circuitry in action. However, should a faulty condition arise, the amplifier will stop playing and the LED indicator on the front panel will light up.

If this happens, turn the amplifier off, let it cool down for several minutes, and attempt to identify and correct the problem that caused the protection circuitry to engage. When you turn the amplifier back on, the protection circuit will automatically reset and the indicator LED should go out.

In most cases, the protection circuitry activates because of a fault condition such as shorted speaker wires, or inadequate ventilation leading to an overheating condition. In very rare cases, highly reactive or extremely low impedance speaker loads could cause the protection circuit to engage.

If the protection circuitry triggers repeatedly and you are unable to isolate and correct the faulty condition, contact your authorized Rotel dealer for assistance in troubleshooting.

Input Signal Connections

The RB-1080 gives you a choice of two different kinds of input connections – conventional unbalanced RCA type connections (such as found on nearly all audio equipment) or balanced XLR-type connections for use with some high-end preamps or digital processors featuring this lower noise connection.

NOTE: To prevent loud potentially damaging noises, make sure the amplifier is turned off when you make any changes to the input signal configuration.

Input Selector Switch 8

Set the switch select the inputs that are being used. Set it to Unbalanced if the RCA inputs are used. Set it to Balanced if the XLR inputs are used.

RCA Inputs (unbalanced) 5

See Figure 2

When a component with RCA connectors – such as a preamplifier or surround sound processor – supplies signals to the RB-1080, the RCA-type phono plug inputs should be used.

Select high quality audio interconnect cables. Connect each of the outputs from the preamplifier or signal processor to the corresponding Unbalanced Input of the RB-1080.

XLR Inputs (balanced) 6

See Figure 3

If you are using one of the high-end preamplifiers or processors with low-noise balanced signal outputs to drive your RB-1080, you may choose to use these low-noise XLR-type connections. See your authorized Rotel dealer for the appropriate cables.

Connect XLR audio interconnect cables from each of the outputs from the preamplifier or signal processor to the corresponding Balanced Input of the RB-1080.

Speaker Connection

Speaker Selection

We recommend using loudspeakers with a nominal impedance of 4 ohms or higher with the RB-1080. You should exercise some caution in driving multiple pairs of speakers in parallel configuration, because the effective impedance the amplifier sees is cut in half. For example, when driving two pair of 8 ohm speakers, the amplifier sees a 4 ohm load. When driving multiple speakers in parallel, it is recommended that you select speakers with a nominal impedance of 8 ohms or higher. Speaker impedance ratings are less than precise. In practice, very few loudspeakers will present any problems for the RB-1080. See your authorized Rotel dealer if you have any questions.

Speaker Wire Selection

Use insulated two-conductor stranded wire to connect the RB-1080 to the speakers. The size and quality of the wire can have an audible effect on the performance of the system. Standard speaker wire will work, but can result in lower output or diminished bass response, particularly over longer distances. In general, heavier wire will improve the sound. For best performance, you may want to consider special high-quality speaker cables. Your authorized Rotel dealer can help in the selection of appropriate cables for your system.

Polarity and Phasing

The polarity — the positive/negative orientation of the connections — for every speaker and amplifier connection must be consistent so all the speakers will be in phase. If the polarity of one connection is mistakenly reversed, bass output will be very weak and stereo imaging degraded. All wire is marked so you can identify the two conductors. There may be ribs or a stripe on the insulation of one conductor. The wire may have clear insulation with different color conductors (copper and silver). There may be polarity indications printed on the insulation. Identify the positive and negative conductors and be consistent with every speaker and amplifier connection.

Speaker Connection 7

The RB-1080 has two pairs of color coded binding posts on the back panel. These connectors accept bare wire, connector lugs, or dual banana type connectors (except in the European Community countries where their use is not permitted).

Route the wire from the RB-1080 to the speakers. Give yourself enough slack so you can move the components enough to allow access to the speaker connectors.

If you are using dual banana plugs, connect them to the wires and then plug into the backs of the binding posts. The hexagonal thumbscrews of the binding posts should be screwed in all the way (clockwise).

If you are using terminal lugs, connect them to the wires. If you are attaching bare wires directly to the binding posts, separate the wire conductors and strip back the insulation from the end of each conductor. Be careful not to cut into the wire strands. Unscrew (turn counterclockwise) the binding post hexagonal thumbscrews. Place the connector lug or wire around the binding post shaft. Turn the hexagonal thumbscrews clockwise to clamp the connector lug or wire firmly in place.

Note: Be sure there are no loose wire strands that could touch adjacent wires or connectors.

Troubleshooting

Most difficulties in audio systems are the result of poor or wrong connections, or improper control settings. If you encounter problems, isolate the area of the difficulty, check the control settings, determine the cause of the fault and make the necessary changes. If you are unable to get sound from the RB-1080, refer to the suggestions for the following conditions:

Front Panel Power Indicator Is Not Lit

No main power to the RB-1080. Check the front panel power switch. Make sure that it is set to the on position. Check AC power connections at the amplifier and the AC outlet.

Fuse Replacement **13**

If everything checks out correctly and you still cannot get the amplifier to turn on, check for a blown fuse. Disconnect the AC from the wall and remove the fuse holder **13** on the back panel. If the fuse is blown, replace with a new fuse and try again.

Note: Make sure that the power cord is disconnected from the wall before checking or replacing the fuse. Replace only with the identical size and type fuse (10 amp AGC).

No Sound

If the amp is getting AC power, but is producing no sound, check the Protection indicator on the front panel. If it is lit, see below. If not, check all of your connections and control settings on associated components. Check the input selector switch on the RB-1080 back panel to be sure that its setting matches the type of input you are using.

Protection Indicator Is Lit

The front panel indicator lights when the RB-1080 protection circuits have shut off the amplifier. Typically, this occurs only when the ventilation openings are blocked, when there is faulty speaker wiring, or after a period of extreme use. Turn off the system and wait for the amp to cool. Then push the front panel power switch in and out to reset the protection devices. If the problem is not corrected or reoccurs, there is a problem with the system or the amplifier itself.

Specifications

Continuous Power Output (20-20 kHz, < 0.03%)	200 watts/ch into 8 ohms
Total Harmonic Distortion (20Hz-20kHz, 8 ohms)	< 0.03%
Intermodulation Distortion (60 Hz : 7 kHz, 4:1)	< 0.03%
Frequency Response (+0.5 dB, -3 dB)	15Hz-100kHz
Damping Factor (20-20,000 Hz, 8 ohms)	1000
Speaker Impedance	4 ohms minimum
Signal to Noise Ratio (IHF A network)	116 dB
Input Impedance/Sensitivity	32 k Ohms/1.5volt
Power Requirements	115 Volts, 60 Hz (U.S. version) 230 Volts, 50 Hz (European version)
Power Consumption	5500 Watts
Dimensions (W x H x D)	430 x 121 x 385 mm 17 ³ / ₈ x 4 ³ / ₄ x 15 ³ / ₁₆ in
Weight (net)	15.5 kg, 34.1 lb.

All specifications are accurate at the time of printing.
Rotel reserves the right to make improvements without notice.